

Transducer VELOMITOR model TV22



FUNCTION

The model TV22 seismic transducer measure the absolute vibration of the machine by the securely mounted to a flat surface.

TECNICAL SPECIFICATIONS

Sensor type	: PZT piezoelectrical velocimeter	
Measure type	: seismic (absolute vibrations)	
Dynamic range	: ±1270 mm/s-pk	± 50 in/sec-pk
Frequency response	: ± 3 db 1,5÷12000 Hz	90÷720.000 CPM
Vibrations direction	: any	
Sensitivity (± 10%)	: 3,94 mV/mm/s	100 mV/in/sec
Resonant frequency	: 25000 Hz	1.500.000 CPM
Max. shock protection	: 5000 g pk	
Setting time	: > 4 "	> 4 sec
Power supply	: 2÷10 mA - 18÷30 Vdc	
Max. output impedance	: < 100 ohm	
Electrical case isolation	: >10 (8) Ohm	
Electromagnetic sensitivity	: certified CE	
Temperature range	: -50 °C ÷ +121 °C	-58 °F ÷ +250 °F
Case material	: 316L stainless steel	
Mounting hole	: standard = ¼"-28UNF-2B (or to be specify with the order)	
Weigth	: 90 gm	3.2 oz
External protection	: IP65 EN60529/10.91 standards	
Connection	: 2 pin MIL-C-5015 serial 3106/10, included connector	

MOUNTING

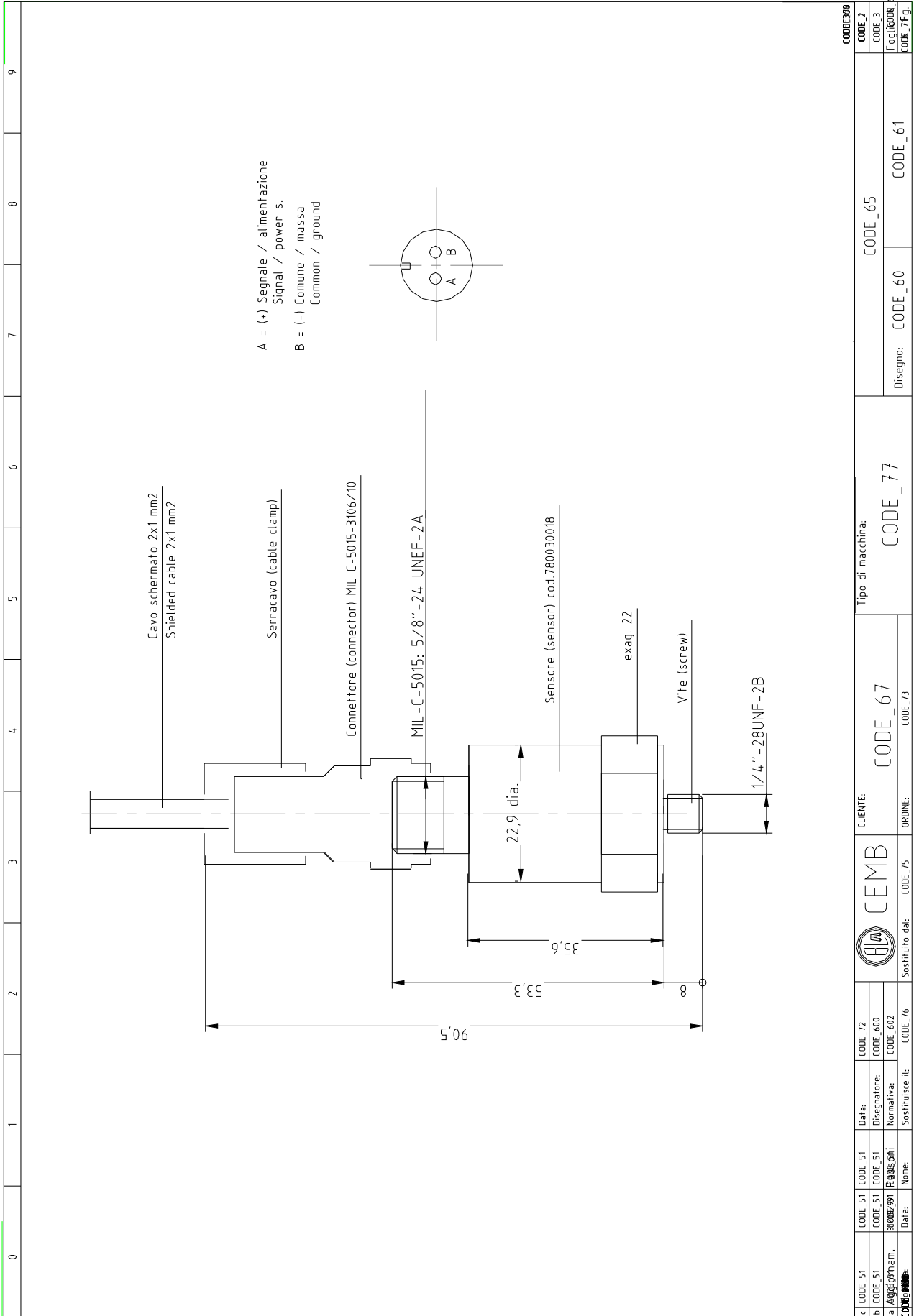
Prepare a smooth, flat mounting surface and then drill and tap a mounting hole in the center of this area. Wipe clean the mounting surface and spread on a light film of grease, oil or similar coupling fluid prior to installation.

MAINTENANCE

Nothing

DIMENSION, MOUNTING, CONNECTION

Dis. 73920-P



UTS060706

CODE_51 CODE_51 CODE_51 CODE_51		CODE_72 CODE_72 CODE_72 CODE_72		CLIENTE: CEMB		Tipo di macchina: CODE_77		CODE_65	
CODE_51 CODE_51 CODE_51 CODE_51		CODE_60 CODE_60 CODE_60 CODE_60		ORDINE: CODE_75		CODE_67		CODE_60	
CODE_51 CODE_51 CODE_51 CODE_51		CODE_62 CODE_62 CODE_62 CODE_62		Sostituito da: CODE_76		CODE_77		CODE_61	
CODE_51 CODE_51 CODE_51 CODE_51		CODE_64 CODE_64 CODE_64 CODE_64		Sostituisce il: CODE_76		Disegno: CODE_60		CODE_61	

ASTD67120